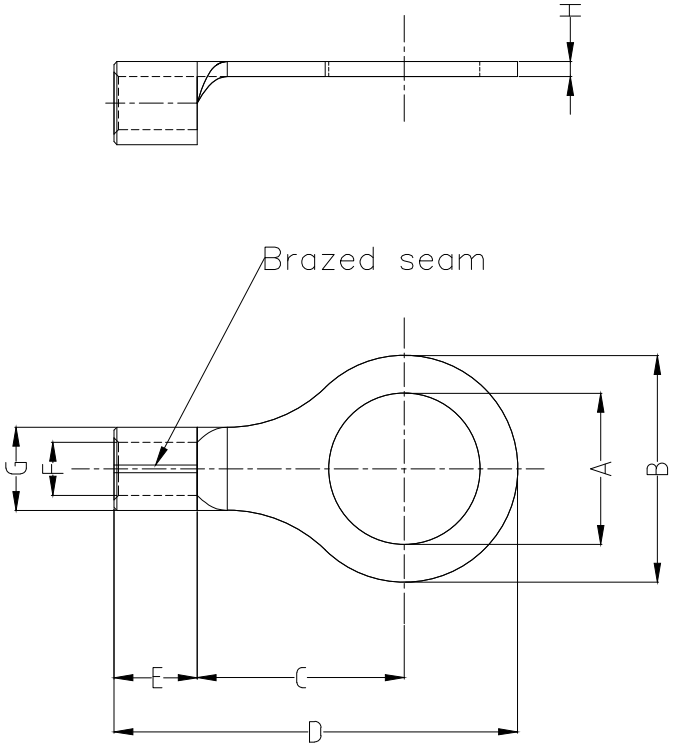


1 2 3 4 5 6 7 8

REV	LOCATIONS	DESCRIPTION	DATE	REVISER	APPD

Notes:

Material: Copper
 Plating: Matte tin plated
 Wire range: 4~6mm² / (12~10AWG)
 Applicable screw: #10 UNC
 Max current: 48A



PART NO.	Dimensions							
	A ±0.3	B ±0.5	C ±1	D ±1	E ±1	F ±0.5	G ±0.5	H ±0.05
FRT01-005500500B0N2	5.3	9.5	8.1	19.8	6.8	3.4	5.5	1.0

<p>THIRD ANGLE PROJECTION</p>	GENERAL TOLERANCES (UNLESS SPECIFIED)		APPROVE BY	DATE	PART NO.	ITEM NO.	<p>Building Technology Cornerstone</p>
	X. ±0.30	X.* ±5'	LEO	09/JAN/21	FRT01-005500500B0N2	FRT01	
	X.X ±0.20	X.X' ±2'	CHECKED BY	DATE	TITLE		
	X.XX ±0.15	X.XX' ±1'	GISELLE	09/JAN/21	Ring tongue terminal		
SCALE	SIZE	X.XXX ±0.10	X.XXX' ±0.5'	DRAWN BY	DATE	THIS DRAWING CONTAINS INFORMATION THAT IS PROPRIETARY TO TXGA INDUSTRIAL ELECTRONICS(S.Z)CO.,LTD AND SHOULD NOT BE USED WITHOUT WRITTEN PERMISSION	
5:1	A4			PYD	09/JAN/21	REV 0	SHEET NO. 1/1

1 2 3 4 5 6 7 8